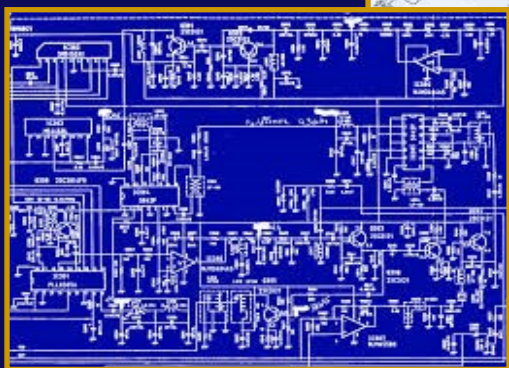




School District of New Berlin



West Performing Arts Center Plans & Layout



School Facility Services LLC

Director of Sales and Services: Matt Newman

Phone: 262-378-9602

Email: Mattfacserv@gmail.com

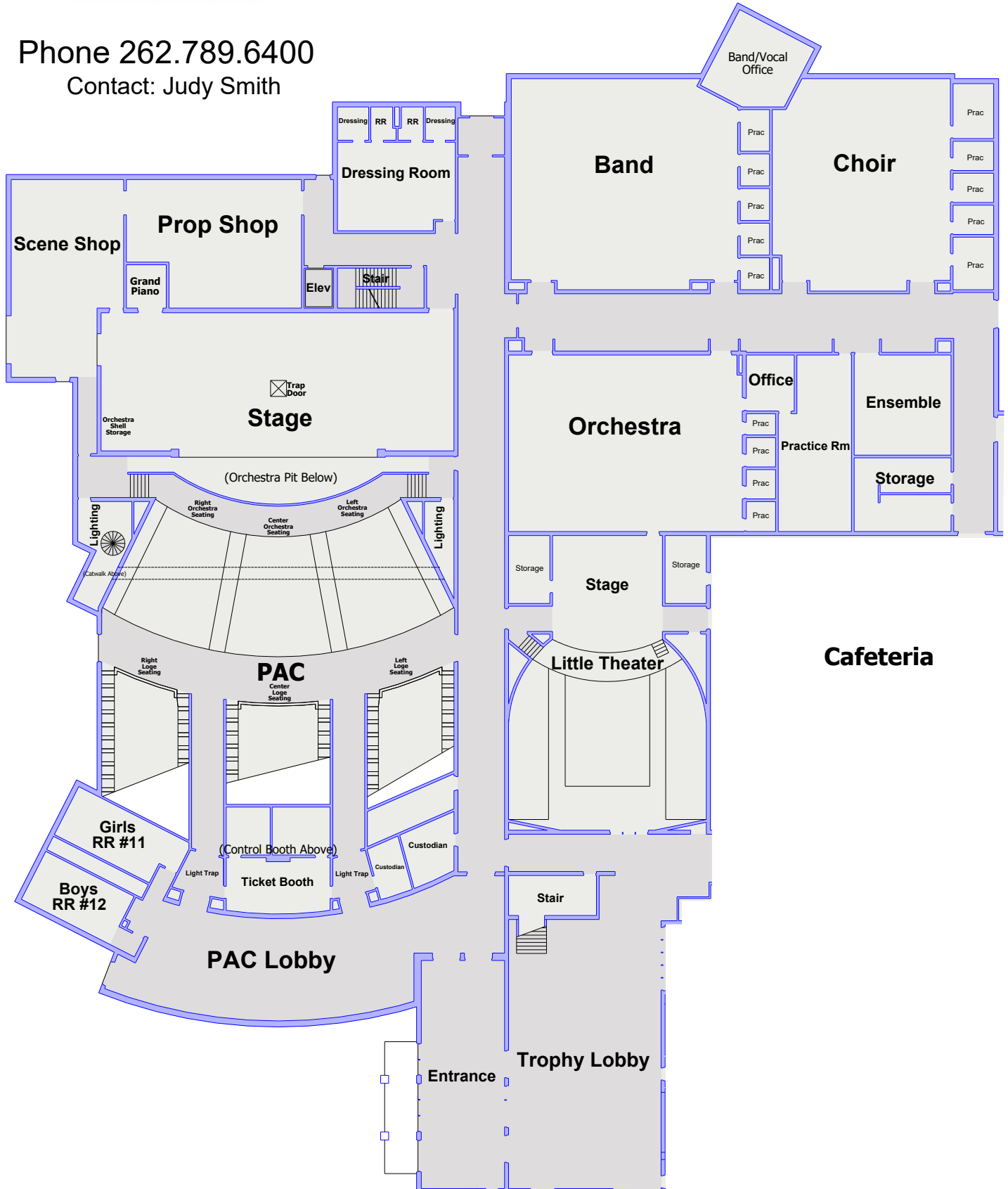


West Performing Arts Center

18695 W Cleveland Ave New Berlin, WI 53146

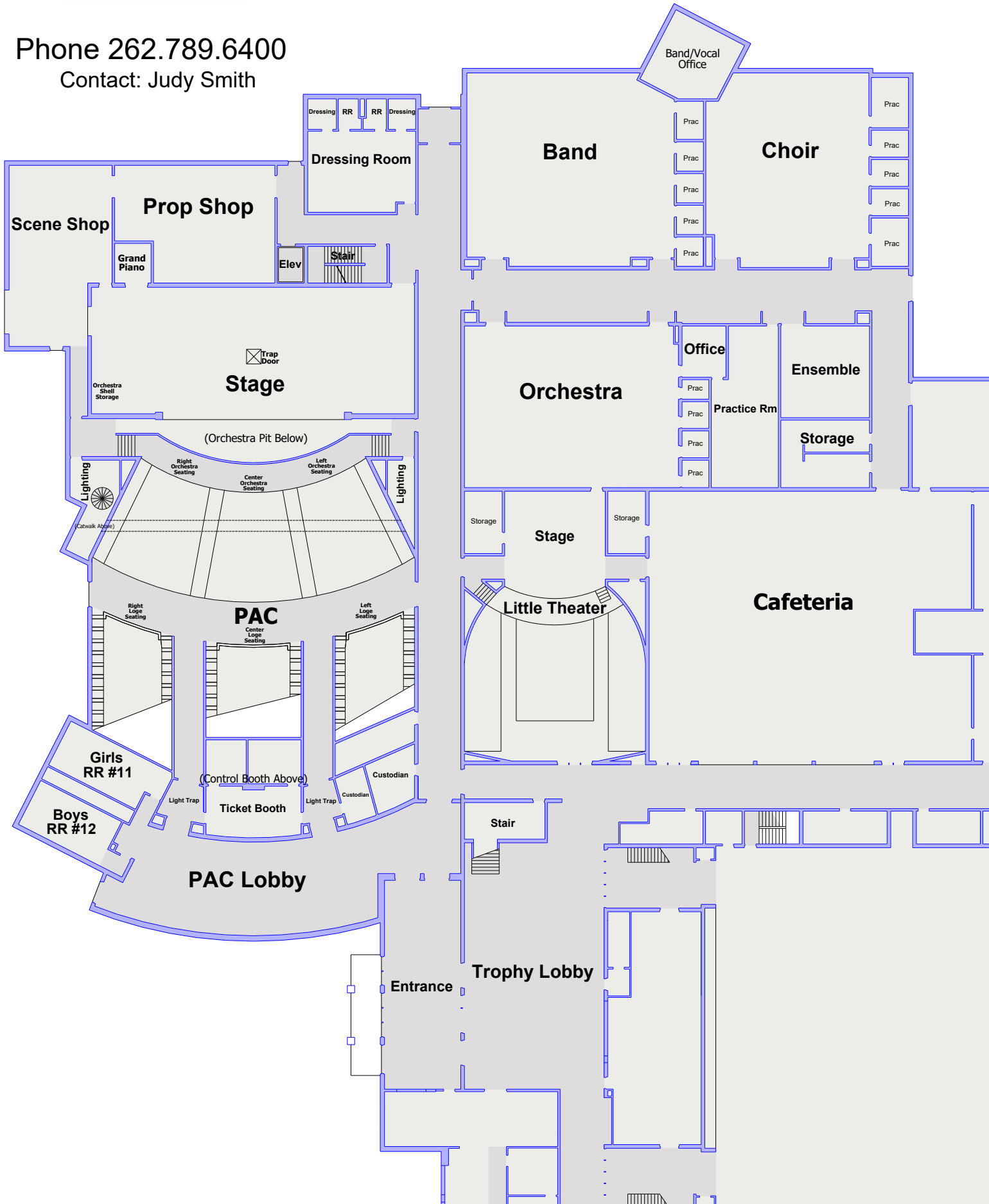
Phone 262.789.6400

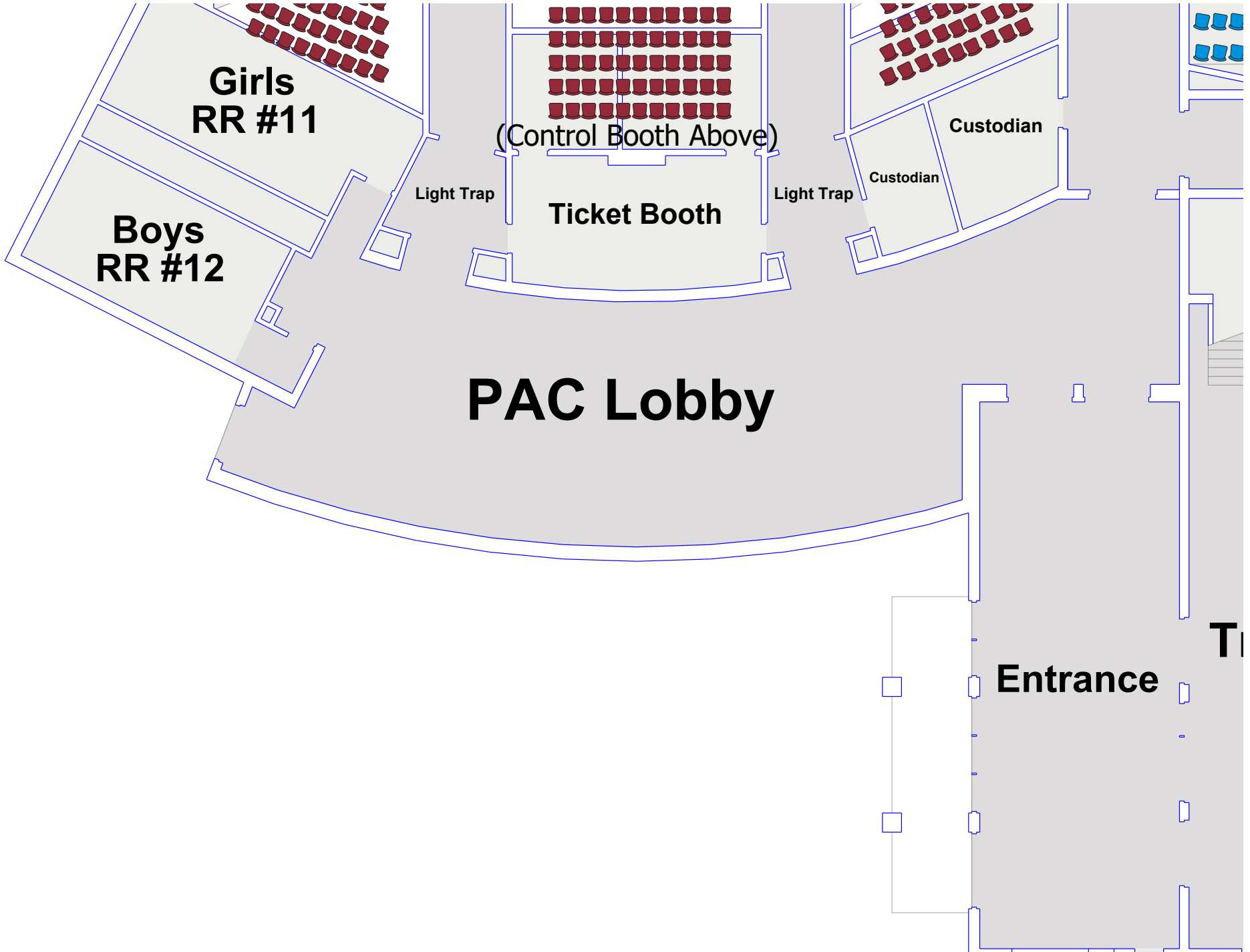
Contact: Judy Smith



Phone 262.789.6400

Contact: Judy Smith





**Girls
RR #11**

**Boys
RR #12**

(Control Booth Above)

Ticket Booth

Light Trap

Light Trap

Custodian

Custodian

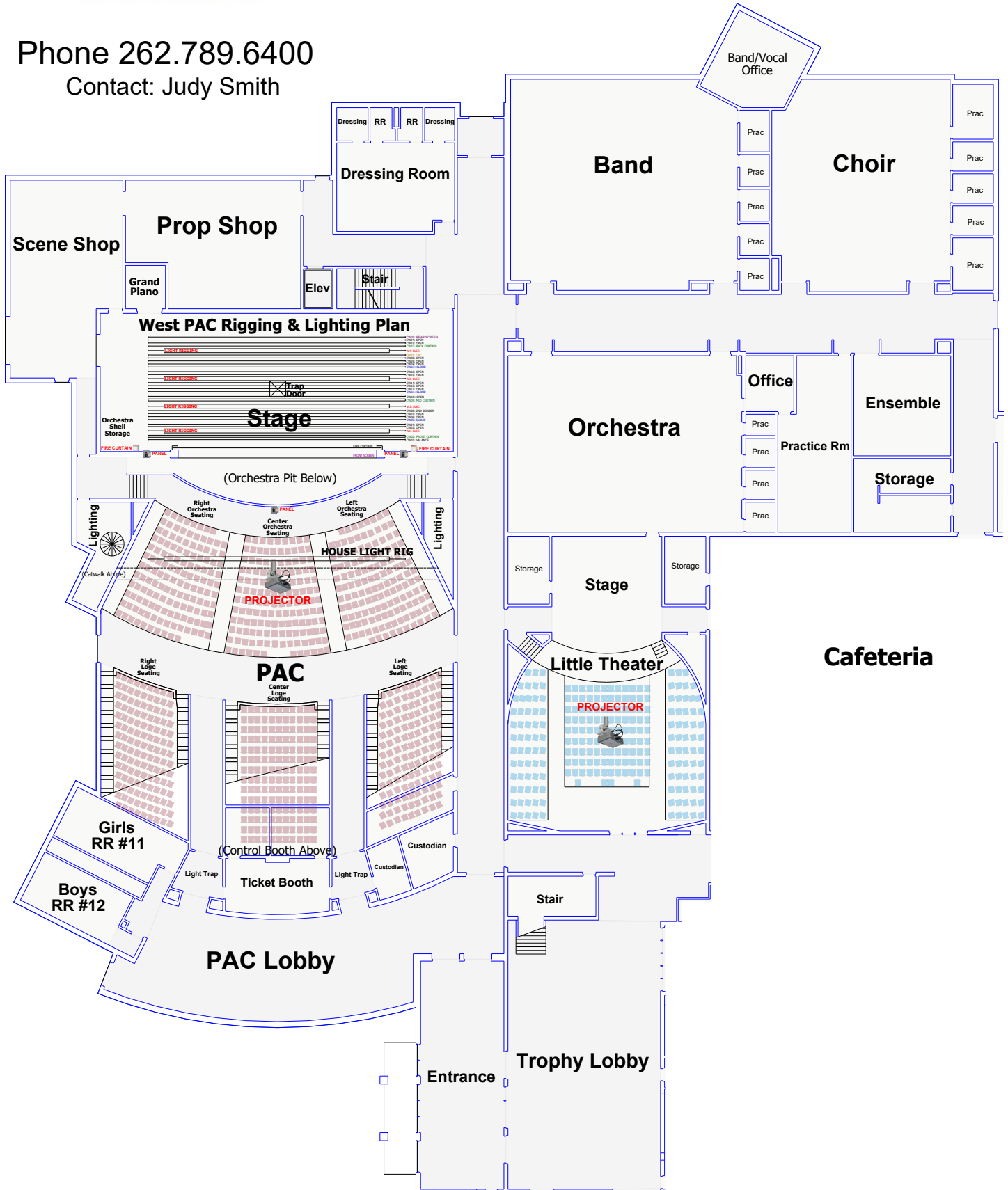
PAC Lobby

Entrance

TI

Phone 262.789.6400

Contact: Judy Smith

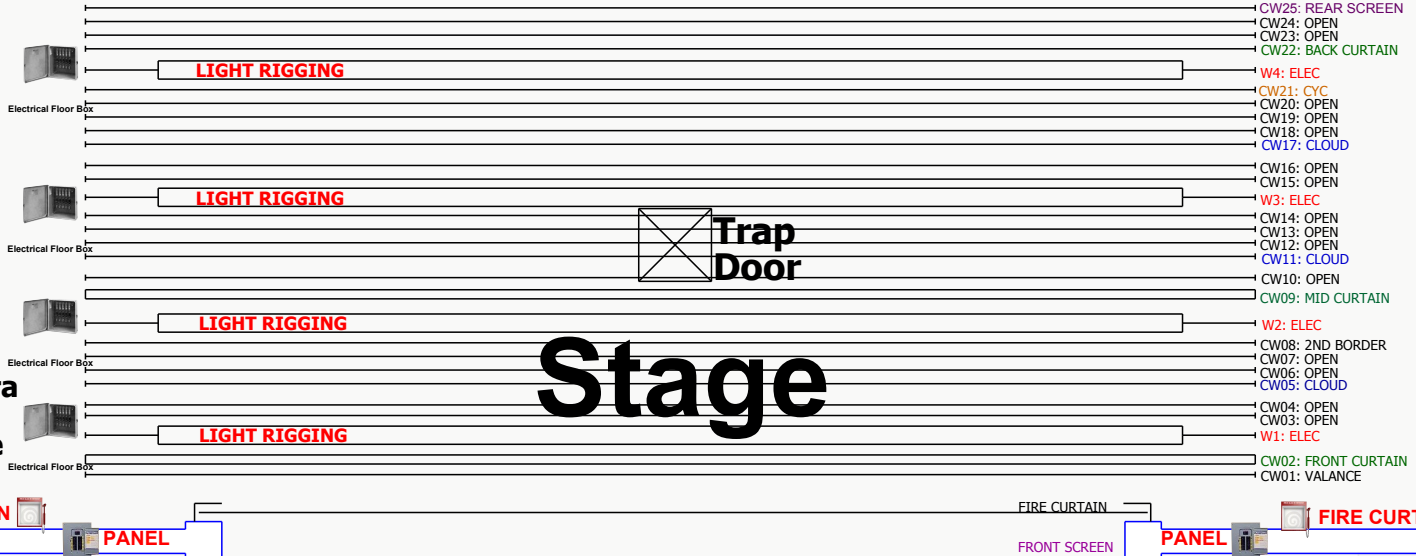


Grand Piano

Elev

Stair

West PAC Rigging & Lighting Plan



- CW25: REAR SCREEN
- CW24: OPEN
- CW23: OPEN
- CW22: BACK CURTAIN
- W4: ELEC
- CW21: CYC
- CW20: OPEN
- CW19: OPEN
- CW18: OPEN
- CW17: CLOUD
- CW16: OPEN
- CW15: OPEN
- W3: ELEC
- CW14: OPEN
- CW13: OPEN
- CW12: OPEN
- CW11: CLOUD
- CW10: OPEN
- CW09: MID CURTAIN
- W2: ELEC
- CW08: 2ND BORDER
- CW07: OPEN
- CW06: OPEN
- CW05: CLOUD
- CW04: OPEN
- CW03: OPEN
- W1: ELEC
- CW02: FRONT CURTAIN
- CW01: VALANCE

Stage

(Orchestra Pit Below)

Lighting

Right
Orchestra
Seating

Left
Orchestra
Seating

Lighting

Center
Orchestra
Seating

HOUSE LIGHT RIG

(Catwalk Above)

PROJECTOR

West PAC Rigging Plan

**Orchestra
Shell
Storage**

Stage



**Trap
Door**

- CW25: REAR SCREEN
- CW24: OPEN
- CW23: OPEN
- CW22: BACK CURTAIN
- W4: ELEC
- CW21: CYC
- CW20: OPEN
- CW19: OPEN
- CW18: OPEN
- CW17: CLOUD
- CW16: OPEN
- CW15: OPEN
- W3: ELEC
- CW14: OPEN
- CW13: OPEN
- CW12: OPEN
- CW11: CLOUD
- CW10: OPEN
- CW09: MID CURTAIN
- W2: ELEC
- CW08: 2ND BORDER
- CW07: OPEN
- CW06: OPEN
- CW05: CLOUD
- CW04: OPEN
- CW03: OPEN
- W1: ELEC
- CW02: FRONT CURTAIN
- CW01: VALANCE

FIRE CURTAIN

FRONT SCREEN

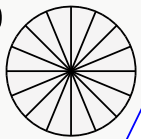
(Orchestra Pit Below)

**Right
Orchestra
Seating**

**Center
Orchestra
Seating**

**Left
Orchestra
Seating**

Lighting



Lighting

HOUSE LIGHT RIG

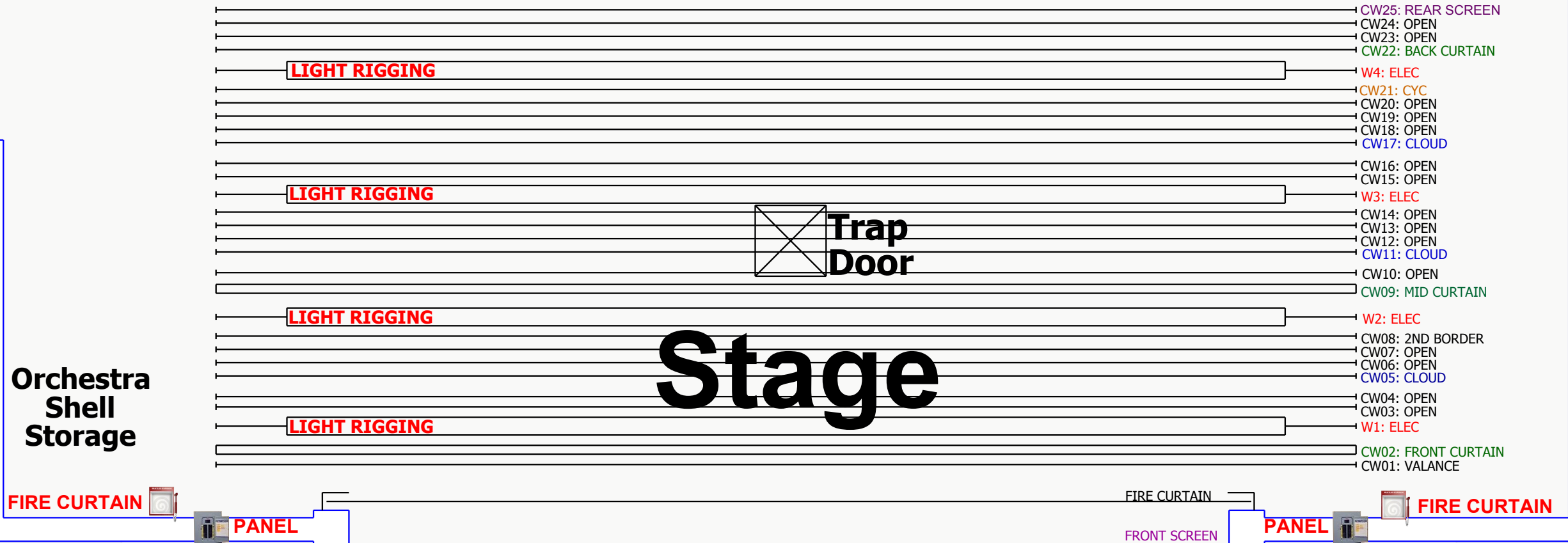
(Catwalk Above)

Grand Piano

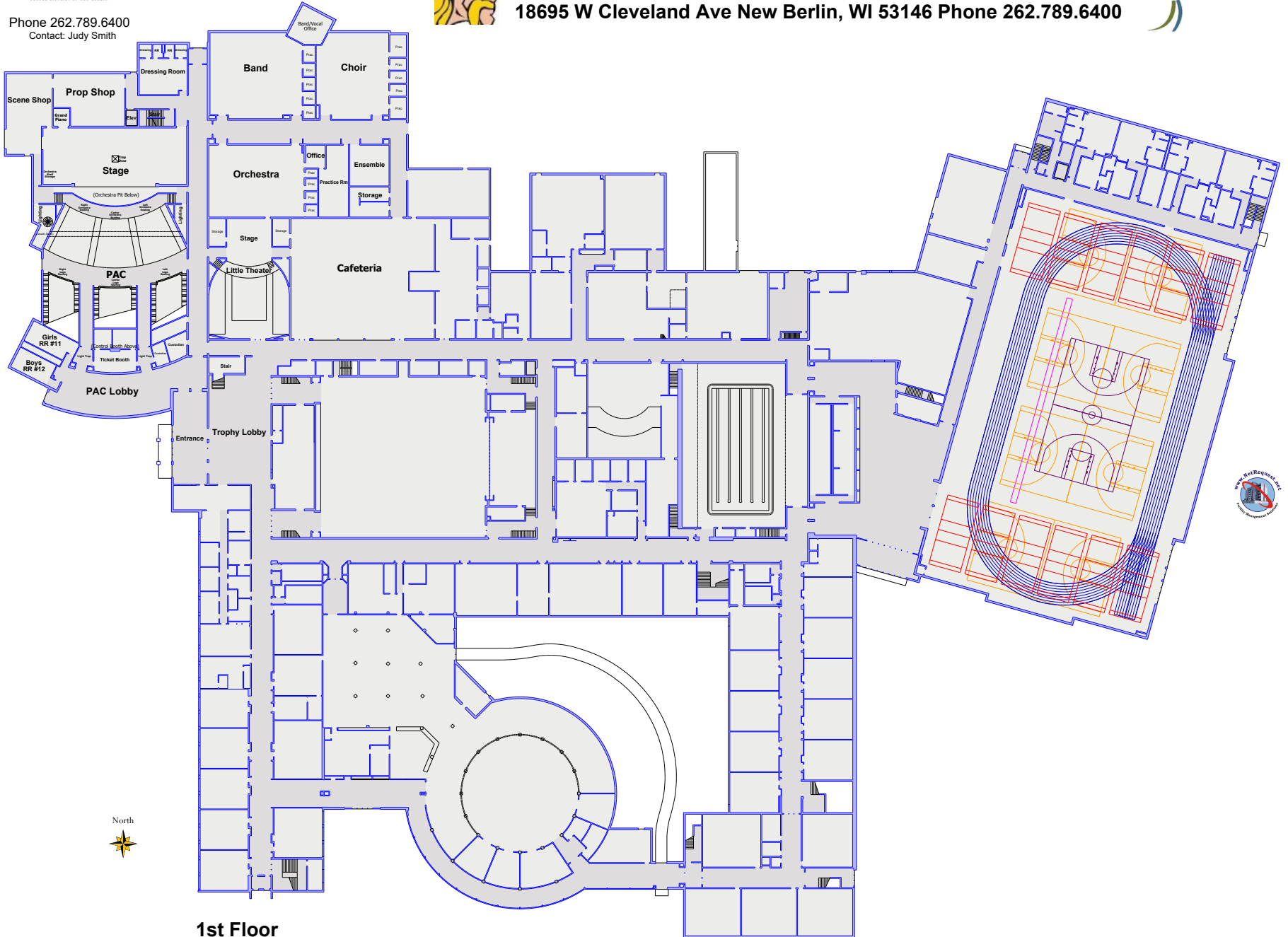
Elev

Stair

West PAC Rigging & Lighting Plan



(Orchestra Pit Below)



1st Floor
254,618 SF



West Middle School / High School Site Plan



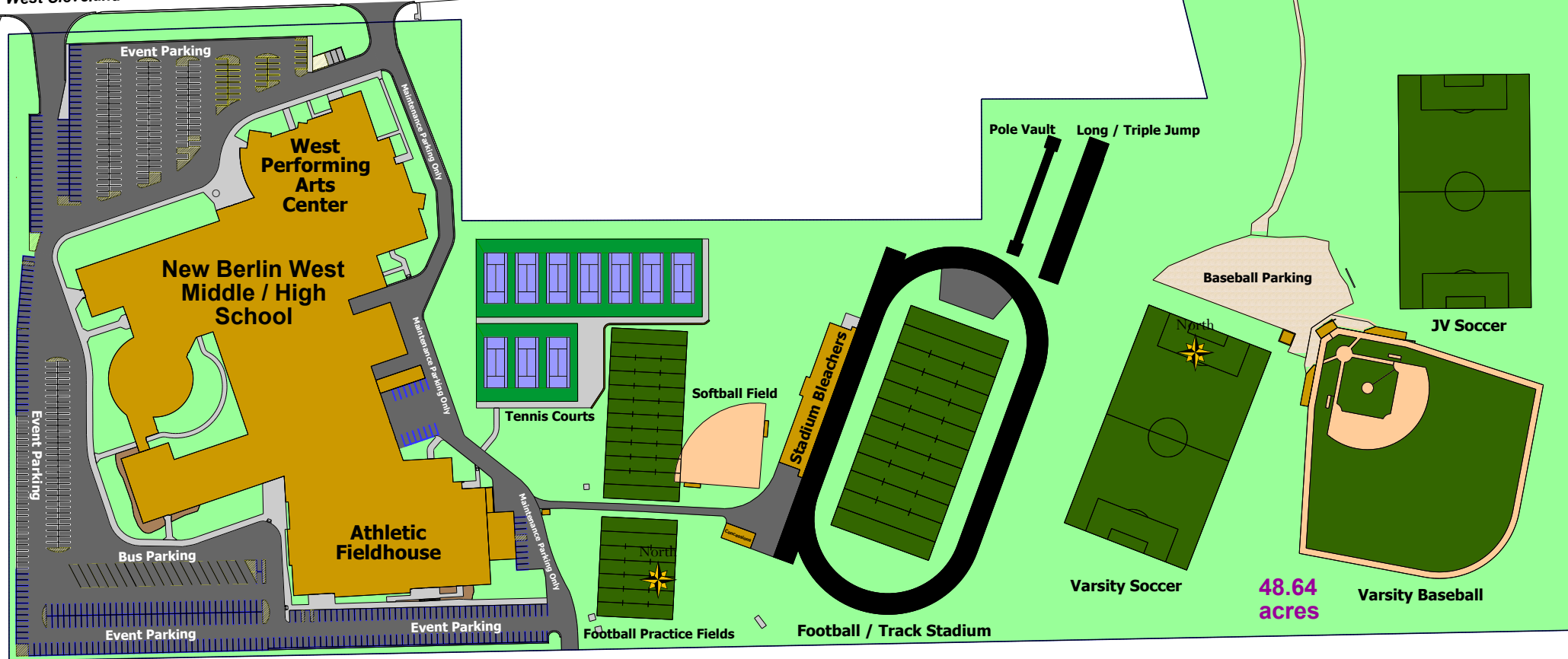
18695 W Cleveland Avenue
New Berlin, WI 53146
Phone 262.789.6400



West Cleveland Avenue

West Cleveland Avenue

West Cleveland Avenue



48.64
acres